



AUCTION

LEADING THE INDUSTRY SINCE 1945

AUCTION #1 - FRIDAY - AUGUST 23, 2019 - 12:00 PM

Two Exciting Real Estate Auctions

Attention: Investors - Landseekers - Selling to Satisfy State Of Ohio Liens

Auction #1 - 7.85 Acres Adjoining Industrial/Commercial Real Estate - Sold In Two Parcels - Choice, Take One Or Both - Railroad Spur & All Utilities - Concrete Surface - Chain-Link Fence - Zoned I-2 Industrial - Austintown Twp. - Just Off Rt. 680 or I-80 On Meridian Rd. & South To Site

Absolute auction, all sells to the highest bidders on location:

N. Meridian Rd., Youngstown, OH 44509

Parcel #1A - Approx. 4.35 acres industrial land - Approx. 300' frontage on Meridian Rd.

Parcel #1B - Approx. 3.5 acres industrial land - approx. 455' frontage on Meridian Rd. - chain-link fence - concrete surface - utilities - railroad spur

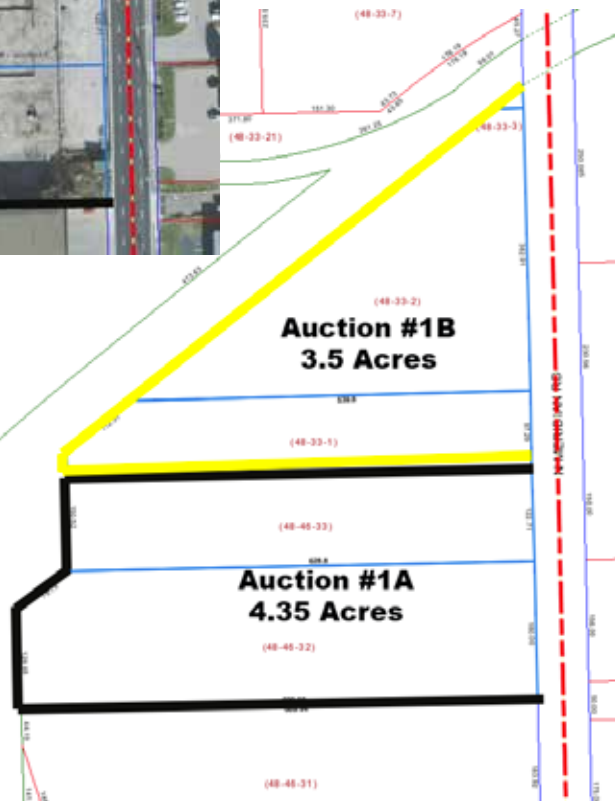
Loads of possibilities - sold choice, take #1A or #1B or both.



Minerals transfer. Maps at site or visit us on the web.



TERMS ON REAL ESTATE: 10% down auction day, balance due at closing. A 10% buyer's premium will be added to the highest bid to establish the purchase price, which goes to the seller. Any desired inspections must be made prior to bidding. All information contained herein was derived from sources believed to be correct. Information is believed to be accurate but not guaranteed. Property to be sold as Separate Parcels and not to be offered as an Entirety.



Information is believed to be accurate but not guaranteed.



330.455.9357 • kikoauctions.com



AUCTION #2 - FRIDAY - AUGUST 23, 2019 - 5:30 PM

Auction #2 - 41.77 Acres Secluded Hideaway With Lake & Woods Plus Mineral Rights - Free Gas - Green Twp. - Mahoning Co. - South Range Schools - Formerly Known As Yellow Duck & Pioneer Park Years Ago

Absolute auction, all sells to the highest bidders on location:

10590 Columbiana Canfield Rd. (St. Rt. 46), Canfield, OH 44406

Directions: Take St. Rt. 46 SE of Canfield or NW of Columbiana to auction. Back long lane.

Watch for KIKO signs.

41.77 acres mostly wooded with nice lake - mature trees plus some open areas - good solid concrete drive to secluded setting with winding gravel drive. Remains of old buildings - gas well with free gas and royalties - gas and water wells - come walk it over. Maps at site or visit us on the web. Very private.

TERMS ON REAL ESTATE: 10% down auction day, balance due at closing. A 10% buyer's premium will be added to the highest bid to establish the purchase price, which goes to the seller. Any desired inspections must be made prior to bidding. All information contained herein was derived from sources believed to be correct. Information is believed to be accurate but not guaranteed. Property to be sold as an Entirety and not to be offered in separate parcels.

Auction By Order Of: Mountain View Development Investment LLC



Auctioneer/Realtor®
RUSSELL T. (RUSTY) KIKO, JR.
330.495.0923
rustykiko@kikocompany.com



330.455.9357 • kikoauctions.com

